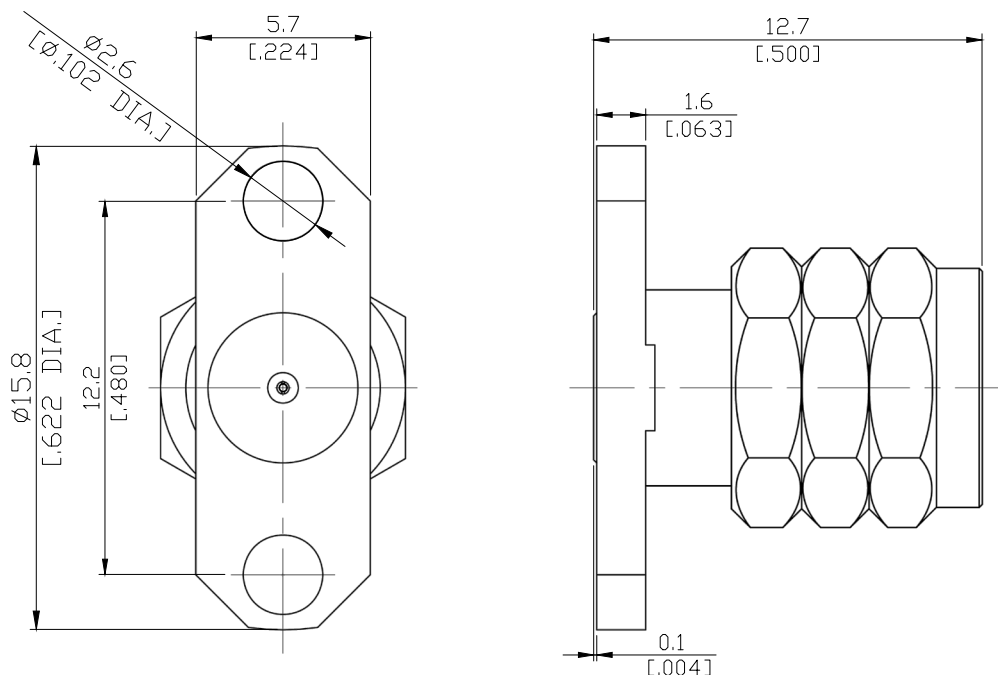


1.85mm Plug (male) Connector 2 Straight Field Replaceable  
12.2mm (.480 inch) Hole Spacing, DC-67GHz VSWR 1.25

## V1BT50-0009A / 9XX



All dimensions are in mm [inch]

Tolerances according to DIN ISO 2768-mH

### Interface

According to

IEC 61169-32

Mechanically compatible with

2.40mm

### Electrical Data

Impedance

50 Ω

Frequency

DC to 67 GHz

VSWR (Return loss)

≤ 1.25 (≥ 19.08 dB) up to 67 GHz

Insertion Loss

≤ 0.05 x √F (GHz) dB

Insulation Resistance

≥ 5 GΩ

Test Voltage

500V rms

Working voltage

150 V rms

Power handling

≥ 100 dB up to 1 GHz

### Material And Plating

Piece Parts	Material	Plating
Centre contact	Beryllium Copper	Gold plating, 3 μinch (Non-magnetic nickel-phosphorus underplating, 80 μinch)
Body	Stainless Steel	Passivated
Insulator	PS	
Gasket	Silicone Rubber	
Coupling nut	Stainless Steel	Passivated

1.85mm Plug (male) Connector 2 Straight Field Replaceable  
12.2mm (.480 inch) Hole Spacing, DC-67GHz VSWR 1.25

## V1BT50-0009A / 9XX

### Mechanical Data

Coupling mechanisms	Screw-lock
Mating Cycles	≥ 500
Captivated Type	Mechanical
Center Contact Captivation: axial	≥ 20 N
Coupling Test Torque	1.65 Nm
Recommended Torque	0.80 Nm to 1.10 Nm

### Environmental Data

Temperature Range	-55°C to +165°C
Thermal shock	IEC 61169-1, Subclause 9.4.4
Corrosion	IEC 61169-1, Subclause 9.4.6
Vibration	IEC 61169-1, Subclause 9.3.3
Shock	IEC 61169-1, Subclause 9.3.14
Moisture Resistance	IEC 61169-1, Subclause 9.4.3
RoHS	compliant

### Packing

Single or 100